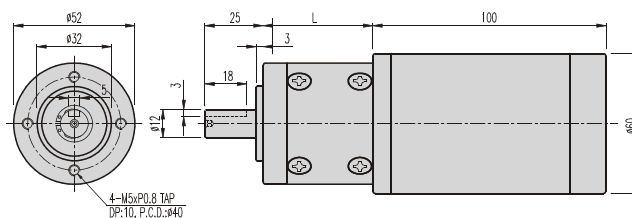


K52-TYPE

Planetary GEARHEAD

DIMENSIONS

K52-K6DS25N SERIES



| GEARHEAD LENGTH | |
|-----------------|------|
| RATIO | L |
| 1/003 ~ 1/004 | 47 |
| 1/012 ~ 1/026 | 62.5 |
| 1/043 ~ 1/126 | 78 |
| 1/150 ~ 1/936 | 93.5 |

MOTOR PERFORMANCE DATA

| ITEM MODEL | VOLTAGE (DC) | NO LOAD | | AT MAX. EFF. | | | STALL | | WEIGHT (g) |
|---------------|-----------------|---------|------|--------------|-----|------|-------|--------|---------------|
| | | A | rpm | kgf.cm | A | rpm | A | kgf.cm | |
| K6DS25N1 | 12V | 1 | 3450 | 0,8 | 3,5 | 3000 | 20 | 5,9 | 840 |
| K6DS25N2 | 24V | 0,45 | 3250 | 0,8 | 1,5 | 3000 | 14,5 | 9 | |

AT MAXIMUM EFFICIENCY (K6DS25N SERIES)

| GEAR | K6DS25N1 | | K6DS25N2 | |
|-------|----------|--------|----------|--------|
| | DC 12V | | DC 24V | |
| | rpm | kgf.cm | rpm | kgf.cm |
| 1/3 | 1000 | 1,9 | 1000 | 1,9 |
| 1/4 | 750 | 2,5 | 750 | 2,5 |
| 1/12 | 250 | 6,1 | 250 | 6,1 |
| 1/15 | 200 | 7,7 | 200 | 7,7 |
| 1/19 | 158 | 9,7 | 158 | 9,7 |
| 1/21 | 143 | 10,7 | 143 | 10,7 |
| 1/26 | 115 | 13,3 | 115 | 13,3 |
| 1/43 | 70 | 17,6 | 70 | 17,6 |
| 1/53 | 57 | 21,7 | 57 | 21,7 |
| 1/66 | 45 | 27 | 45 | 27 |
| 1/81 | 37 | 33 | 37 | 33 |
| 1/100 | 30 | 41 | 30 | 41 |
| 1/113 | 26,5 | 46 | 26,5 | 46 |
| 1/126 | 23,8 | 50 | 23,8 | 50 |
| 1/150 | 20 | 50 | 20 | 50 |
| 1/230 | 13 | 75 | 13 | 75 |
| 1/285 | 10,5 | 93 | 10,5 | 93 |
| 1/353 | 8,5 | 100 | 8,5 | 100 |
| 1/488 | 6,1 | 100 | 6,1 | 100 |
| 1/546 | 5,5 | 100 | 5,5 | 100 |
| 1/676 | 4,4 | 100 | 4,4 | 100 |
| 1/756 | 4 | 100 | 4 | 100 |
| 1/936 | 3,2 | 100 | 3,2 | 100 |

* 출력축 회전방향은 MOTOR의 회전방향과 같습니다.