

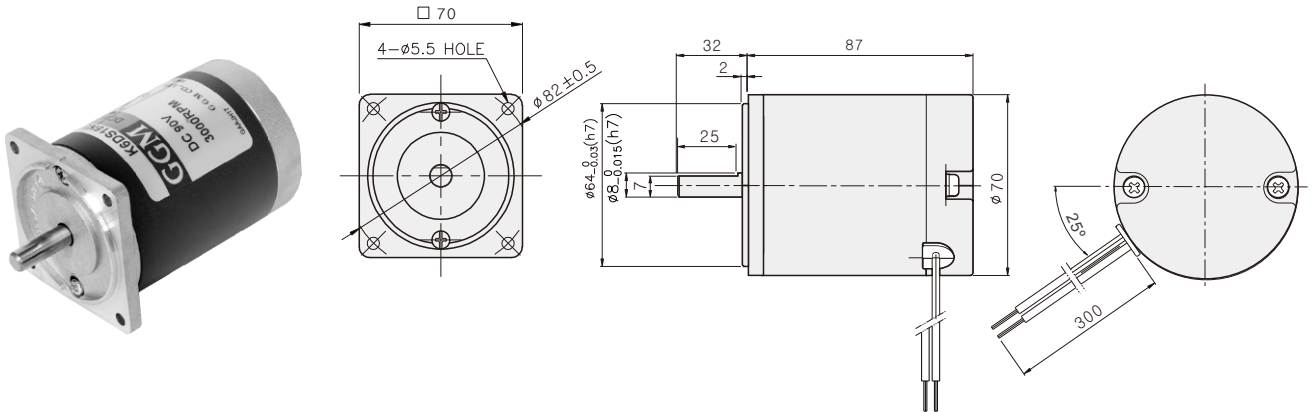
DC MOTOR

15W

□70mm

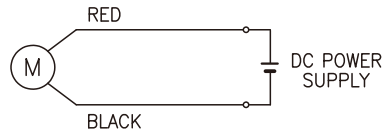
DIMENSIONS

K7DS□N□



CONNECTION DIAGRAMS

RED ← ⊕ CW
BLACK ← ⊕ CCW



회전방향은 출력축에서 볼경우

SPECIFICATIONS

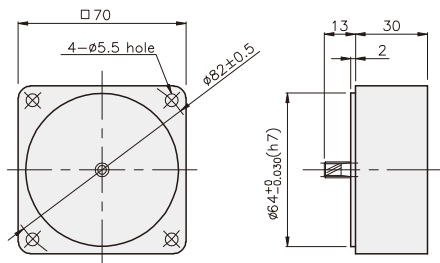
Model	Output (W)	Voltage (V)	RATED			Start T. (N·m/kgf·cm)	Starting Current (A)
			Speed (rpm)	Torque (N·m/kgf·cm)	Current (A)		
K7D□15N1	15	12	3000	0.05/0.5	3.1	0.29/2.9	16
K7D□15N2		24			1.4	0.35/3.5	9
K7D□15N3		90			0.3	0.39/3.9	3

* □ : SHAFT 형상 (S : STRAIGHT, G : PINION)

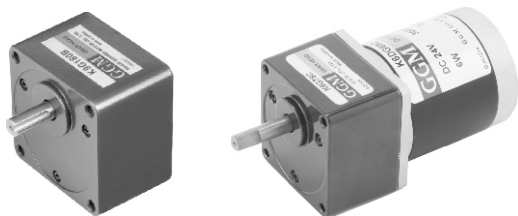
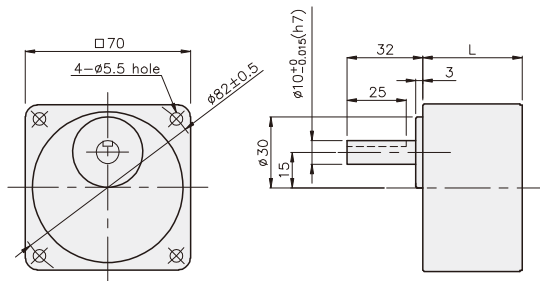
GEARHEAD

DIMENSIONS

DECIMAL GEARHEAD
K7G10BX



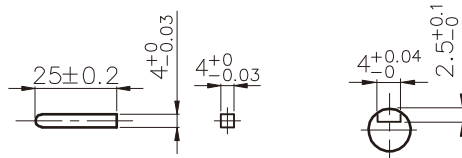
GEARHEAD
K7G□B(C)



KEY SPEC

● KEY

● KEY GROOVE



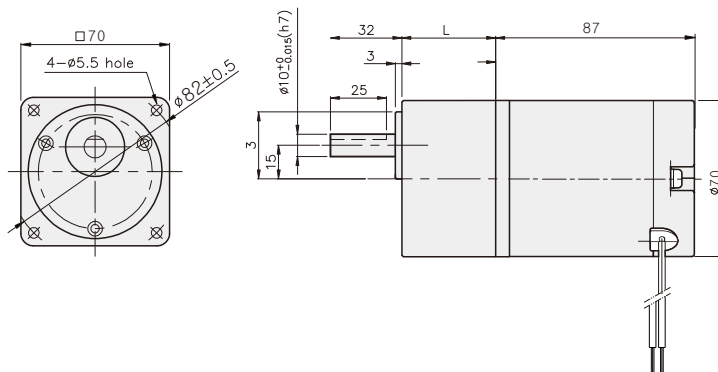
치수도표 및 적용BOLT

품번	L	적용기종	취부 BOLT
01	32	K7G3~18B(C)	M5 P.0.8 X 50
02	42	K7G20~200B(C)	M5 P.0.8 X 65
03	30	K7G10BX	M5 P.0.8 X 90

무게

PART	WEIGHT(kg)	
MOTOR	0.95	
K7G10BX	0.32	
GEAR HEAD	K7G3~18B(C)	0.38
	K7G20~40B(C)	0.46
	K7G50~200B(C)	0.51

K7DG15N□ + K7G□B(C)



DC MOTOR

RATED TORQUE OF GEARHEAD

● K7G□B(C)

단위 = 상단 : N·m / 하단 : kgf·cm

Model	Speed (rpm)	Ratio																							
		1000	833	600	500	400	333	300	240	200	167	150	120	100	83	75	60	50	40	33	30	25	20	17	15
K7DG15N□	Ratio	3	3.6	5	6	7.5	9	10	12.5	15	18	20	25	30	36	40	50	60	75	90	100	120	150	180	200
		0.12 1.2	0.14 1.4	0.20 2.0	0.24 2.4	0.30 3.0	0.36 3.6	0.39 3.9	0.49 4.9	0.59 5.9	0.71 7.1	0.71 7.1	0.89 8.9	1.07 10.7	1.28 12.8	1.42 14.2	1.60 16.0	1.92 19.2	2.40 24.0	2.88 28.8	3.20 32.0	3.83 38.3	4.79 47.9	5 50	5 50

- * GEARHEAD·DECIMAL GEARHEAD는 별매입니다.
- * GEARHEAD의 품명중 □에는 감속비가 들어갑니다.
- * ■ 색이 MOTOR와 같은 방향, 그 외에는 반대 방향입니다.
- * 표의 감속비보다 더 감속하고자 할 경우는 GEARHEAD와 MOTOR 사이에 감속비 10의 DECIMAL GEARHEAD를 설치할 수 있습니다. 이 경우의 허용 TORQUE는 5 N·m / 50 kgf·cm 입니다.