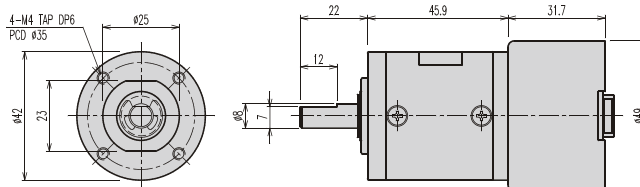


## K42-TYPE

## Planetary GEARHEAD

### DIMENSIONS

#### K42-4932 BLDC SERIES



GEARHEAD LENGTH

RATIO	L	RATIO	L
1/4	32.5	1/212 ~ 1/864	52.6
1/14 ~ 1/24	39.2	1/1062 ~ 1/3600	59.3
1/49 ~ 1/144	45.9		

#### BLDC MOTOR PERFORMANCE DATA

ITEM MODEL	VOLTAGE (DC)	NO LOAD		AT MAX. EFF.			WEIGHT (g)
		mA	rpm	gf.cm	A	rpm	
NB2-4932-050	24V	500	5000	385	1	3800	210

#### AT MAXIMUM EFFICIENCY (BLDC 4932 SERIES)

MODEL	NB2-4932-050	
	DC 24V	
	rpm	kgf.cm
1/4	950	1.4
1/14	271	4.4
1/17	224	5.3
1/24	158	7.5
1/49	78	14
1/61	62	17
1/84	45	24
1/104	37	29
1/144	26	30
1/212	18	30
1/263	14	30
1/294	13	30
1/504	7.5	30
1/624	6.1	30
1/720	5.3	30
1/864	4.4	30
1/1062	3.6	30
1/1470	2.6	30
1/2500	1.52	30
1/3000	1.26	30
1/3600	1.05	30

\* 출력축 회전방향은 MOTOR의 회전방향과 같습니다.