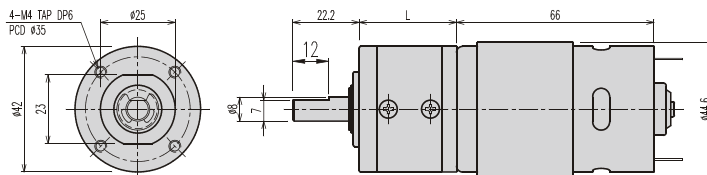


K42-TYPE

Planetary GEARHEAD

DIMENSIONS

K42-4266 SERIES



GEARHEAD LENGTH

RATIO	L	RATIO	L
1/4	32.5	1/212 ~ 1/864	52.6
1/14 ~ 1/24	39.2	1/1062 ~ 1/3600	59.3
1/49 ~ 1/144	45.9		

MOTOR PERFORMANCE DATA

ITEM MODEL	VOLTAGE (DC)	NO LOAD		AT MAX. EFF.			STALL		WEIGHT (g)
		A	rpm	gf.cm	A	rpm	A	kgf.cm	
ND1-4266-070	12V	1	7000	520	3,8	5900	24	3,8	350
ND2-4266-070	24V	0,5	7000	520	1,8	5900	13	4,3	

AT MAXIMUM EFFICIENCY (4266 SERIES)

MODEL GEAR	ND1-4266-070		ND2-4266-070	
	DC 12V		DC 24V	
	rpm	kgf.cm	rpm	kgf.cm
1/4	1470	1,7	1470	1,7
1/14	420	4,9	420	4,9
1/17	346	5,9	346	5,9
1/24	245	8,4	245	8,4
1/49	120	14	120	14
1/61	96	17	96	17
1/84	70	24	70	24
1/104	57	29	57	29
1/144	41	30	41	30
1/212	28	30	28	30
1/263	22	30	22	30
1/294	20	30	20	30
1/504	11,7	30	11,7	30
1/624	9,4	30	9,4	30
1/720	8,2	30	8,2	30
1/864	6,8	30	6,8	30
1/1062	5,5	30	5,5	30
1/1470	4	30	4	30
1/2500	2,35	30	2,35	30
1/3000	1,96	30	1,96	30
1/3600	1,63	30	1,63	30

* 출력축 회전방향은 MOTOR의 회전방향과 같습니다.