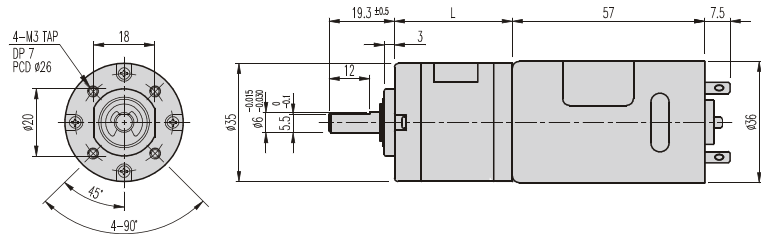


## K35-TYPE

## Planetary GEARHEAD

### DIMENSIONS

#### K35-3657 SERIES



GEARHEAD LENGTH

RATIO	L
1/005	22.1
1/014 ~ 1/027	28.5
1/051 ~ 1/139	34.9
1/189 ~ 1/721	41.3

#### MOTOR PERFORMANCE DATA

ITEM MODEL	VOLTAGE (DC)	NO LOAD		AT MAX. EFF.			STALL		WEIGHT (g)
		mA	rpm	gf.cm	A	rpm	A	kgf.cm	
ND1-3657-065	12V	300	6500	200	1,3	5500	9	1,6	200
ND2-3657-065	24V	150	6500	200	0,65	5500	4,5	1,6	

#### AT MAXIMUM EFFICIENCY (3657 SERIES)

MODEL GEAR	ND1-3657-065		ND2-3657-065	
	DC 12V		DC 24V	
	rpm	kgf.cm	rpm	kgf.cm
1/005	1100	1	1100	1
1/014	392	2,2	392	2,2
1/019	289	3	289	3
1/027	203	4,2	203	4,2
1/051	107	7,4	107	7,4
1/071	77	10	77	10
1/100	55	12	55	12
1/139	39,5	12	39,5	12
1/189	29,1	12	29,1	12
1/264	20,8	12	20,8	12
1/369	14,9	12	14,9	12
1/516	10,6	12	10,6	12
1/721	7,6	12	7,6	12

\* 출력축 회전방향은 MOTOR의 회전방향과 같습니다.