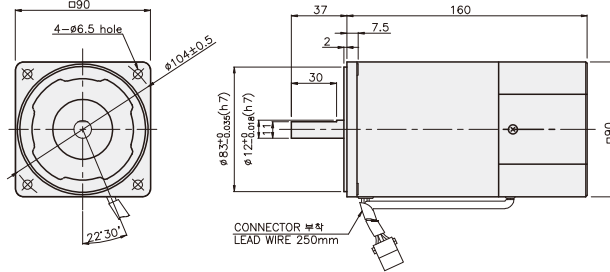
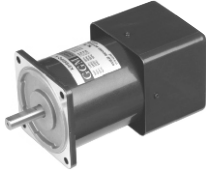


## SPEED CONTROL MOTOR - SU SERIES

### 60W

### □90mm

K9□S60F□-SU



### SPECIFICATIONS

60W 연속정격, 4극

Model	Voltage (V)	Frequency (Hz)	Speed (rpm)	Permissible Torque		Start T. (N·m/kgf·cm)	Current (A)	Condenser (μF)
				1200 rpm (N·m/kgf·cm)	90 rpm (N·m/kgf·cm)			
K9I□60FJ-SU	100	50	90 ~ 1400	0.45/4.5	0.15/1.5	0.24/2.4	2.3	20
		60	90 ~ 1700			0.21/2.1		
K9I□60FU-SU	110	60	90 ~ 1700	0.45/4.5	0.15/1.5	0.285/2.85	2	16
	115					2.1		
K9I□60FL-SU	200	50	90 ~ 1400	0.49/4.9	0.14/1.4	0.24/2.4	1.2	5
		60	90 ~ 1700	0.45/4.5	0.16/1.6	0.21/2.1		
K9I□60FC-SU	220	50	90 ~ 1400	0.49/4.9	0.14/1.4	0.24/2.4	0.91	4
		60	90 ~ 1700	0.45/4.5	0.16/1.6	0.21/2.1	0.9	
	230	50	90 ~ 1400	0.49/4.9	0.14/1.4	0.24/2.4	1	
		60	90 ~ 1700	0.45/4.5	0.16/1.6	0.24/2.4		
K9I□60FD-SU	240	50	90 ~ 1400	0.49/4.9	0.14/1.4	0.28/2.8	1.1	4

\* □ : SHAFT 형상(S : STRAIGHT, P : PINION)

### RATED TORQUE OF GEARHEAD

#### ● 단상 100V/115V

단위 = 상단 : N·m / 하단 : kgf·cm

Model	Ratio	Speed (rpm)	Ratio																								
			3	3.6	5	6	7.5	9	10	12.5	15	18	20	25	30	36	40	50	60	75	90	100	120	150	180	200	
K9I□60F□-SU K9P□B, BF	1200	200V/220V/230V/240V/50Hz	1.09	1.31	1.82	2.19	2.73	3.28	3.65	4.10	4.92	5.90	6.56	7.38	8.86	10.63	11.81	14.76	17.71	20	20	20	20	20	20	20	20
		200V/220V/230V/60Hz	1.09	1.31	1.82	2.19	2.73	3.28	3.65	4.10	4.92	5.90	6.56	7.38	8.86	10.63	11.81	14.76	17.71	20	20	20	20	20	20	20	20
K9I□60F□-SU K9P□B, BF	90	200V/220V/230V/240V/50Hz	0.36	0.44	0.61	0.73	0.91	1.09	1.22	1.37	1.64	1.97	2.19	2.46	2.95	3.54	3.94	4.92	5.90	6.64	7.97	8.86	10.63	13.29	15.94	17.71	17.71
		200V/220V/230V/60Hz	0.36	0.44	0.61	0.73	0.91	1.09	1.22	1.37	1.64	1.97	2.19	2.46	2.95	3.54	3.94	4.92	5.90	6.64	7.97	8.86	10.63	13.29	15.94	17.71	17.71

#### ● 단상 200V/240V

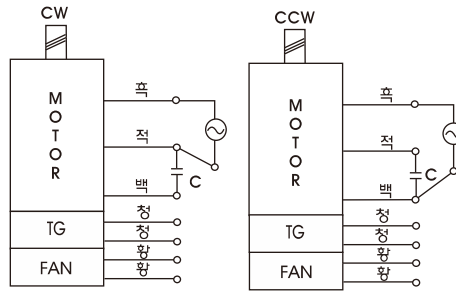
단위 = 상단 : N·m / 하단 : kgf·cm

Model	Ratio	Speed (rpm)	Ratio																								
			3	3.6	5	6	7.5	9	10	12.5	15	18	20	25	30	36	40	50	60	75	90	100	120	150	180	200	
K9I□60F□-SU K9P□B, BF	1200	200V/220V/230V/240V/50Hz	1.19	1.43	1.98	2.38	2.98	3.57	3.97	4.47	5.36	6.43	7.14	8.04	9.64	11.57	12.86	16.07	19.29	20	20	20	20	20	20	20	20
		200V/220V/230V/60Hz	1.09	1.31	1.82	2.19	2.73	3.28	3.65	4.10	4.92	5.90	6.56	7.38	8.86	10.63	11.81	14.76	17.71	20	20	20	20	20	20	20	20
K9I□60F□-SU K9P□B, BF	90	200V/220V/230V/240V/50Hz	0.34	0.41	0.57	0.68	0.85	1.02	1.13	1.28	1.53	1.84	2.04	2.30	2.76	3.31	3.67	4.59	5.51	6.20	7.44	8.27	9.92	12.40	14.88	16.53	16.53
		200V/220V/230V/60Hz	0.39	0.47	0.65	0.78	0.97	1.17	1.30	1.46	1.75	2.10	2.33	2.62	3.15	3.78	4.20	5.25	6.30	7.09	8.50	9.45	11.34	14.17	17.01	18.90	18.90

- \* GEARHEAD-DECIMAL GEARHEAD는 별매입니다.
- \* GEARHEAD의 품명중 □에는 감속비가 들어갑니다.
- \* 색이 MOTOR와 같은 방향, 그 외에는 반대 방향입니다.
- \* 표의 감속비보다 더 감속하고자 할 경우는 GEARHEAD와 MOTOR 사이에 감속비 10의 DECIMAL GEARHEAD를 설치할 수 있습니다. 이 경우의 허용 TORQUE는 20 N·m / 200 kgf·cm 입니다.
- \* 회전수는 MOTOR의 동기 회전수 (50 Hz : 1800 rpm, 60 Hz : 1800 rpm)를 기준으로 하여 감속비로 나누어서 계산하였습니다. 실제의 회전수는 부하의 크기에 따라서 표시된 수치보다 2~20% 적습니다.

## GEARHEAD

### CONNECTION DIAGRAMS



회전방향은 출력축에서 볼 경우

### DIMENSIONS

K9P□B

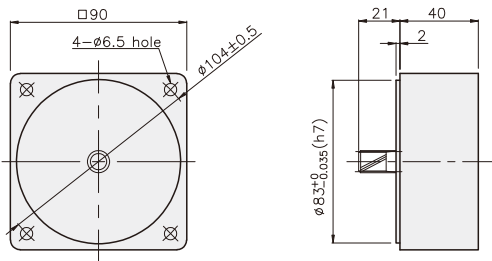


K9P□BF



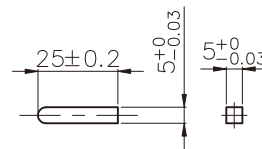
### DECIMAL GEARHEAD

K9P10BX

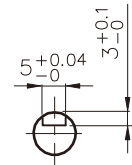


### KEY SPEC

● KEY

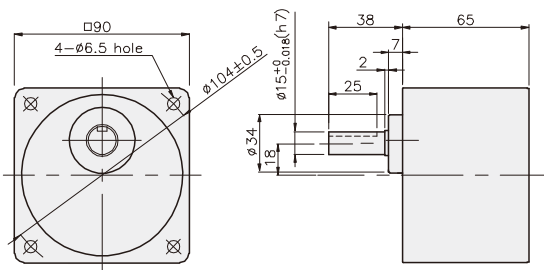


● KEY GROOVE

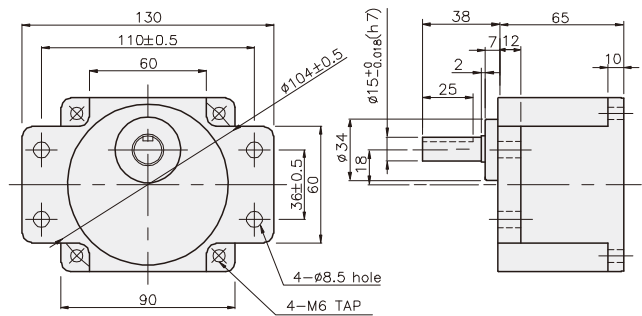


### GEARHEAD

K9P□B



K9P□BF



## GEARHEAD

### DIMENSIONS

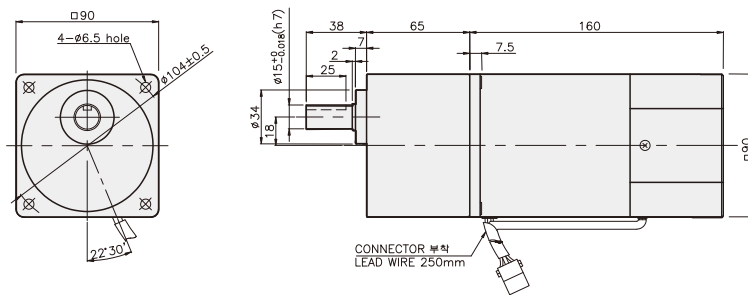
K9IP60F□-SU + K9P□B



K9IP60F□-SU + K9P□BF



K9IP60F□-SU + K9P□B



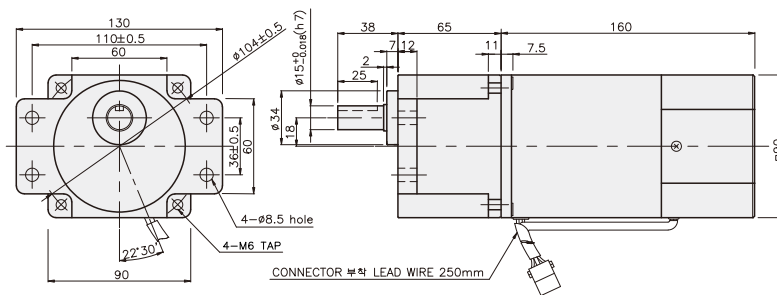
#### 치수도표

품번	적용기준	취부 BOLT
01	K9P3~200B	M6 P1.0 X 95
02	K9P10BX	M6 P1.0 X 140

#### 무게

PART	WEIGHT(kg)	
MOTOR	3.06	
DECIMAL GEARHEAD	0.62	
GEAR HEAD	K9P3~10B	1.22
	K9P12.5~20B	1.32
	K9P25~60B	1.42
	K9P75~200B	1.45

K9IP60F□-SU + K9P□BF



#### 치수도표

품번	적용기준	취부 BOLT
01	K9P3~200BF	M6 P1.0 X 20
02	K9P10BX	M6 P1.0 X 65

#### 무게

PART	WEIGHT(kg)	
MOTOR	3.58	
DECIMAL GEARHEAD	0.62	
GEAR HEAD	K9P3~10BF	1.22
	K9P12.5~20BF	1.30
	K9P25~60BF	1.42
	K9P75~200BF	1.44