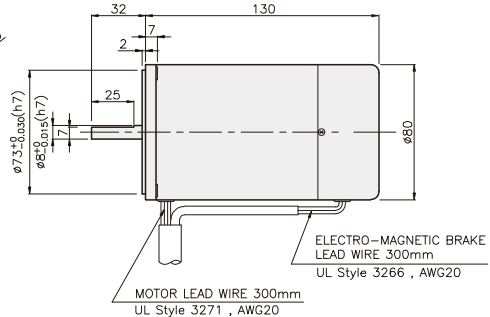
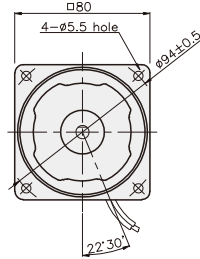


BRAKE MOTOR

25W

□80mm

K8□S25N□-B



SPECIFICATIONS

25W 단상 : 30분 정격, 삼상 : 연속정격, 4극

Model	Duty	Voltage (V)	Frequency (Hz)	Current (A)	Start T. (N·m/kgf·cm)	Rated T. (N·m/kgf·cm)	Speed (rpm)	Condenser (μF)	Friction T. (N·m/kgf·cm)		
K8R□25NJ-B K8R□25NU-B K8R□25NL-B K8R□25NC-B K8R□25ND-B	단상 30분	100	50	0.65	0.15/1.5	0.195/1.95	1250	10	0.4/4		
			60	0.74		0.165/1.65	1500				
		110	60	50	0.51	0.13/1.3	0.165/1.65	1500	6	0.4/4	
				115	0.54						
		200	50	50	0.33	0.16/1.6	0.195/1.95	1250	2.5	0.4/4	
				60	0.37		0.16/1.6	1550			
		220	50	50	0.29	0.15/1.5	0.195/1.95	1250	2	0.4/4	
				60	0.34		0.165/1.65	1500			
		230	50	50	0.35	0.165/1.65	0.195/1.95	1250	2	0.4/4	
				60	0.34		0.165/1.65	1500			
		K8I□25NT-B K8I□25NH-B K8I□25NM-B K8I□25NV-B K8I□25NQ-B K8I□25NZ-B	삼상 연속	200	50	0.27	0.5/5	0.19/1.9	1300	-	0.4/4
					60	0.24	0.4/4	0.16/1.6	1550		
220	50			50	0.28	0.6/6	0.185/1.85	1350	-	0.4/4	
				60	0.24	0.48/4.8	0.155/1.55	1600			
230	50			50	0.29	0.65/6.5	0.185/1.85	1350	-	0.4/4	
				60	0.25	0.52/5.2	0.155/1.55	1600			
380	50			50	0.17	0.6/6	0.19/1.9	1300	-	0.4/4	
				60	0.14	0.48/4.8	0.155/1.55	1600			
400	50			50	0.17	0.73/7.3	0.19/1.9	1300	-	0.4/4	
				60	0.15	0.6/6	0.155/1.55	1600			
415	50			50	0.13	0.55/5.5	0.19/1.9	1300	-	0.4/4	
				60	0.11	0.4/4	0.155/1.55	1600			
440	50	50	0.14	0.63/6.3	0.19/1.9	1300	-	0.4/4			
		60	0.12	0.5/5	0.155/1.55	1600					

* □ : SHAFT 형상(S : STRAIGHT, G : PINION)

RATED TORQUE OF GEARHEAD

● 50Hz

단위 = 상단 : N·m / 하단 : kgf·cm

Model	Speed(rpm)	500	46	300	250	200	166	150	120	100	83	75	60	50	41	37	30	25	20	16	15	12.5	10	8.3	7.5	6
Motor/ Gearhead	Ratio	3	3.6	5	6	7.5	9	10	12.5	15	18	20	25	30	36	40	50	60	75	90	100	120	150	180	200	250
K8□G25N□-B K7G□B(C)	0.45	0.54	0.75	0.90	1.12	1.35	1.50	1.87	2.25	2.70	2.70	3.37	4.05	4.86	5.39	6.07	7.28	8	8	8	8	8	8	8	8	8
	4.5	5.4	7.5	9.0	11.2	13.5	15.0	18.7	22.5	27.0	27.0	33.7	40.5	48.6	53.9	60.7	72.8	80	80	80	80	80	80	80	80	80

● 60Hz

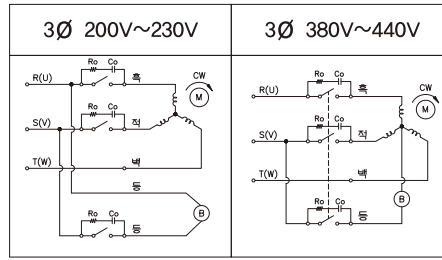
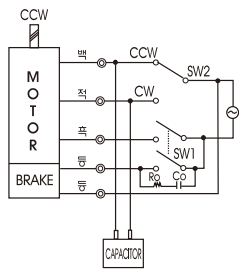
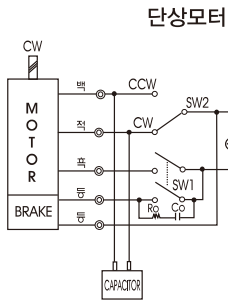
단위 = 상단 : N·m / 하단 : kgf·cm

Model	Speed(rpm)	600	500	360	300	240	200	180	144	120	100	90	72	60	50	45	36	30	24	20	18	15	12	10	9	7.2
Motor/ Gearhead	Ratio	3	3.6	5	6	7.5	9	10	12.5	15	18	20	25	30	36	40	50	60	75	90	100	120	150	180	200	250
K8□G25N□-B K7G□B(C)	0.38	0.45	0.63	0.75	0.94	1.13	1.26	1.57	1.88	2.26	2.26	2.82	3.39	4.07	4.52	5.08	6.10	7.63	8	8	8	8	8	8	8	8
	3.8	4.5	6.3	7.5	9.4	11.3	12.6	15.7	18.8	22.6	22.6	28.2	33.9	40.7	45.2	50.8	61.0	76.3	80	80	80	80	80	80	80	80

- * GEARHEAD-DECIMAL GEARHEAD는 별매입니다.
- * GEARHEAD의 품명중 □에는 감속비가 들어갑니다.
- * 색이 MOTOR와 같은 방향, 그 외에는 반대 방향입니다.
- * 표의 감속비보다 더 감속하고자 할 경우는 GEARHEAD와 MOTOR 사이에 감속비 10의 DECIMAL GEARHEAD를 설치할 수 있습니다. 이 경우의 허용 TORQUE는 8 N·m / 80 kgf·cm 입니다.
- * 회전수는 MOTOR의 동기 회전수 (50 Hz : 1500 rpm, 60 Hz : 1800 rpm)를 기준으로 하여 감속비로 나누어서 계산하였습니다. 실제의 회전수는 부하의 크기에 따라서 표시된 수치보다 2~20% 적습니다.

GEARHEAD

CONNECTION DIAGRAMS



CCW는 U,V,W중
2선을 바꾸어 결선

※ 회전방향은 출력축에서 볼 경우

접점 보호를 위해 결선도와 같이 서지(Surge) 전압 흡수용 Cr.회로를 접속하여 주십시오.

Ro = 5 - 200Ω
Co = 0.1 ~ 0.2μF 200WV(400WV)

DIMENSIONS

K8G□B(C)

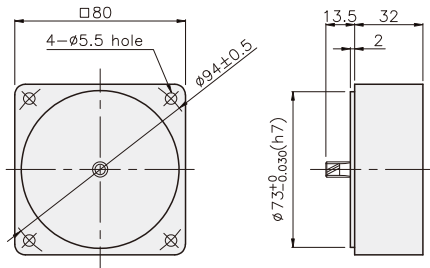


K8□G25N□-B + K8G□B(C)



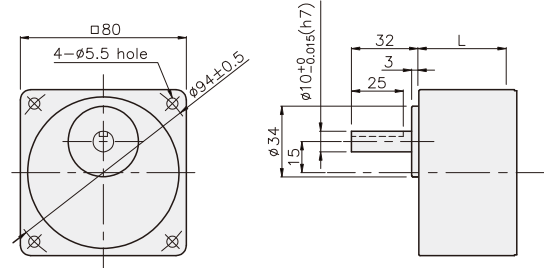
DECIMAL GEARHEAD

K8G10BX



GEARHEAD

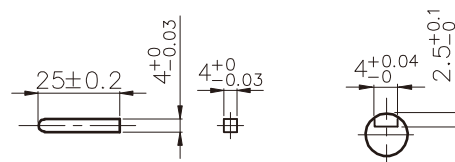
K8G□B(C)



KEY SPEC

● KEY

● KEY GROOVE



치수도표

품번	L	적용기종	취부 BOLT
01	32	K8G3~18B(C)	M4 P0.8 X 50
02	42.5	K8G20~250B(C)	M4 P0.8 X 65
03	32	K8G10BX	M4 P0.8 X 95

무게

PART	WEIGHT(kg)	
MOTOR	1.84	
DECIMAL GEARHEAD	0.46	
GEAR HEAD	K8G3~18B(C)	0.51
	K8G20~40B(C)	0.64
	K8G50~250B(C)	0.70

K8□G25N□-B + K8G□B(C)

